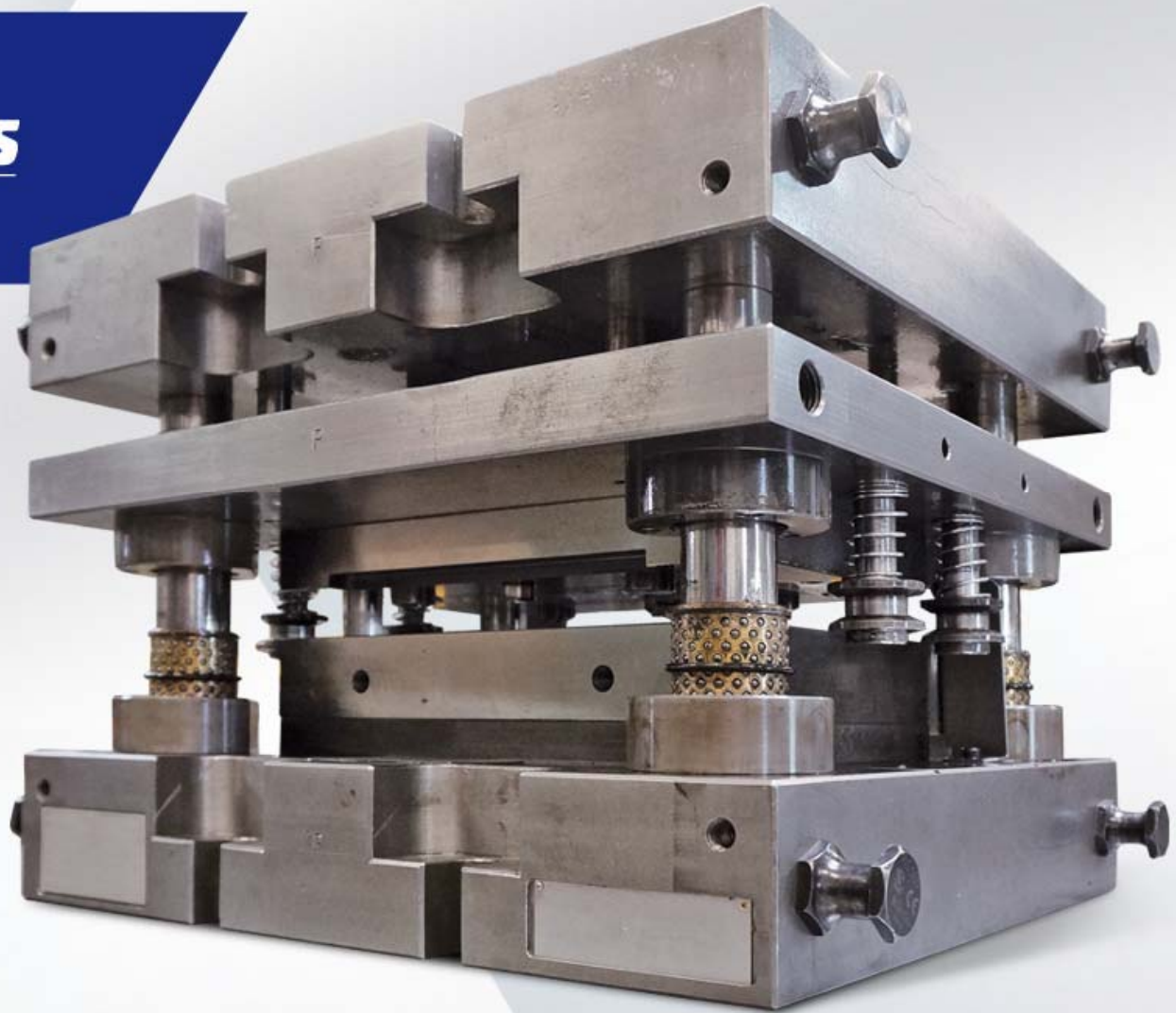


anc components



Precise cutting

High speed stamping

BASIC DATA



Main activity:

Stamping and forming of precise metal parts

Company name: ANC COMPONENTS, s.r.o.

Established: 2006

Address: Nabrezi 737, Prstne, Zlin, CZ

www: anccomponents.cz

Infrastructure:

properties owned by the company

Basic capital:

1 000 000 CZK

Owners:

Ing. Petr Sedláček

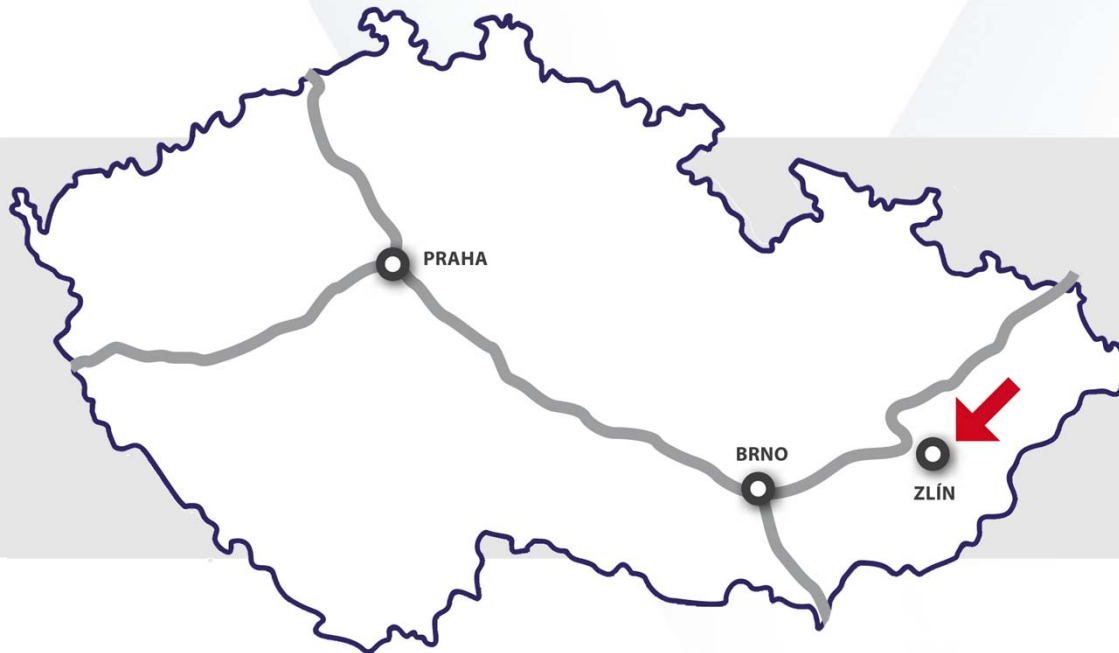
Dušan Jurkovič

Number of employee:

60 // 20% management / 10% quality

Shifts:

3 shifts, 5 days / a week



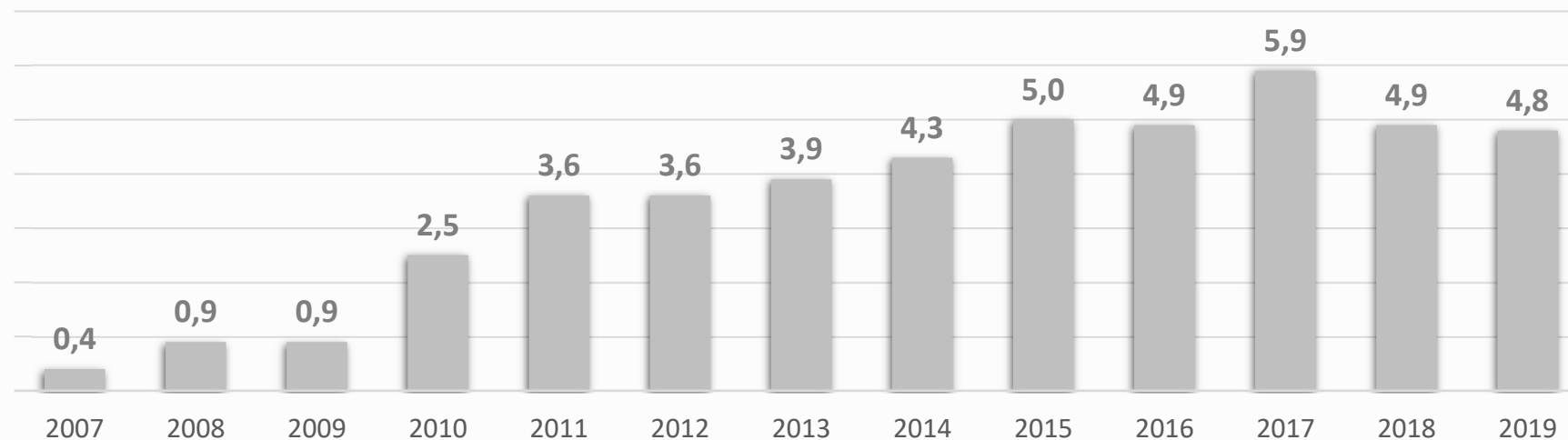
**Connection to
motorway network
make logistics and
business contacts
easier**

WE PRODUCE FOR

anc components

- automotive industry 49%
- building and agricultural machines 17%
- electrotechnical industry 11%
- white goods equipment 14%
- energetics 5%
- others 4%

Turnover in mil. Eur



Turnover in 2019: 4,8 mil. Eur

OUR STRENGTH

anc components

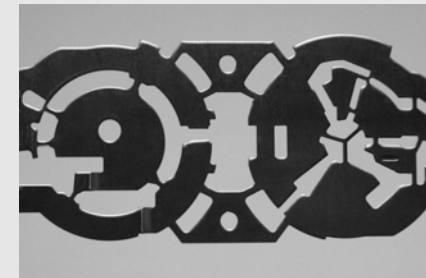
**FLEXIBILITY
+
STABLE TEAM
+
STRONG IS/IT**

Our strong points:

- simple organization structure, owners are a part of the working team
- we are creative in finding solutions for demanding tasks
- strong and stable team of technicians
- universal IS supports effectivity and quick access to information
- certified management system

Benefits for you:

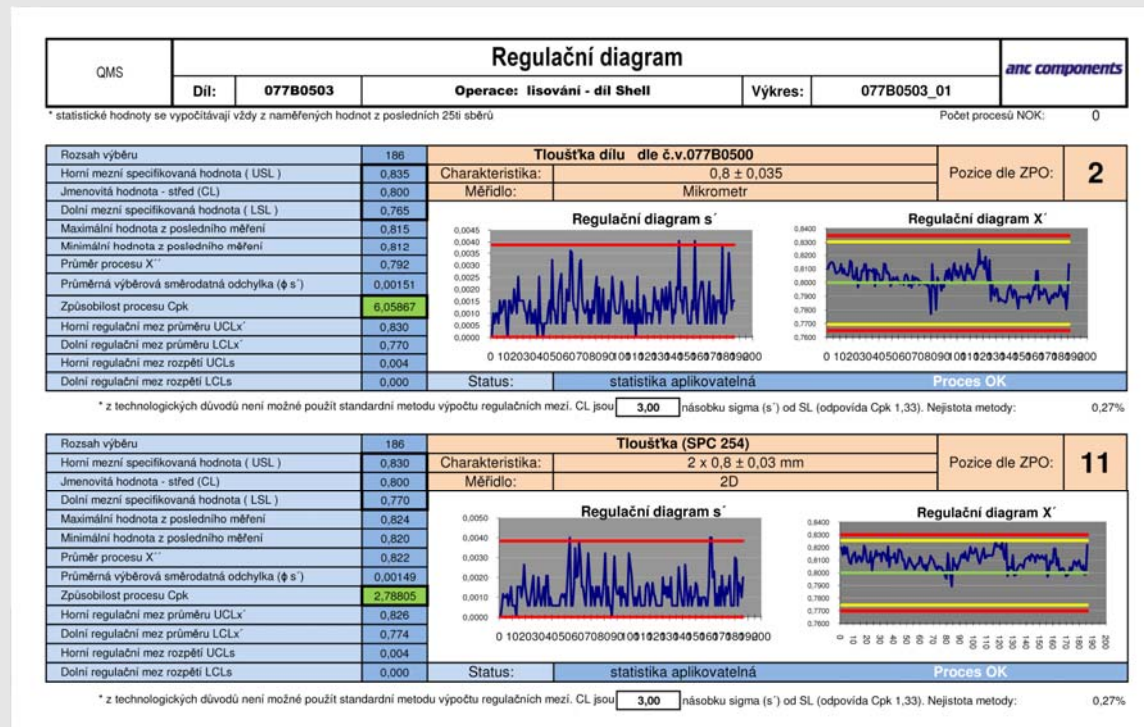
- ⇒ quick, qualified decision making
- ⇒ fulfilment of specific customer requirement
- ⇒ stable deliveries
- ⇒ professional partnership
- ⇒ quality guarantee



Quality management according to **IATF 16949**.

Certified by **TÜV SÜD**. The third recertification successfully passed in 2018.

We emphasize **software support of quality, automatization and reports digitalization**.



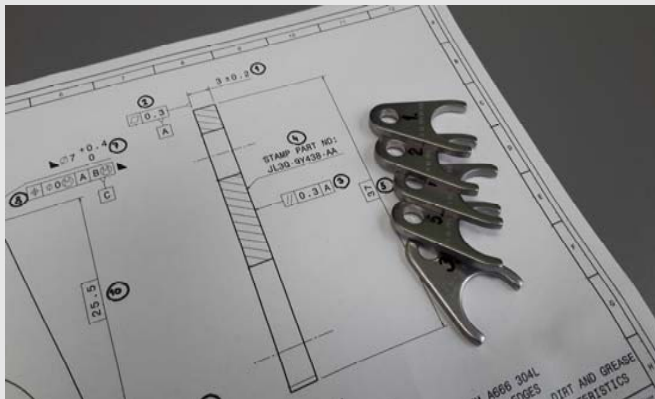
TECHNICAL PREPARATION OF PRODUCTION

anc components

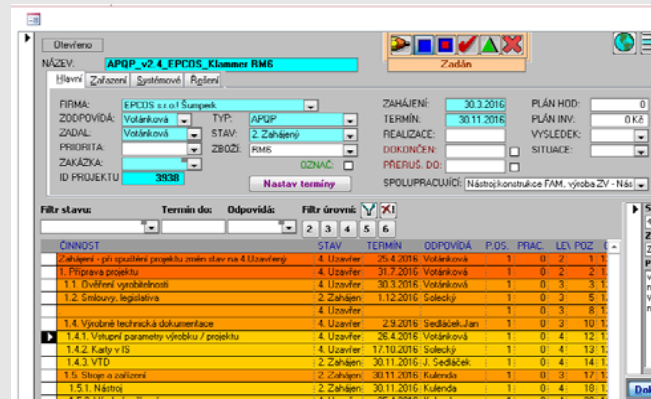
We minimize risks for customers.

Maximum attention is given to the preparation phase of new projects. Procedures and tasks are standardized, described and fully controlled.

We cooperate on part design development.



Risk management: feasibility, checkability, deliveries



Software support for new project management



APQP standard implemented

TECHNOLOGICAL CAPACITY

anc components

Internally:

- precise cutting
- high speed stamping
- conventional stamping
- deburring, washing, grinding, passivation
- bending, packets production, flattening, milling, 100% or camera control

Supplied:

- surface treatment
- heat treatment
- thread production



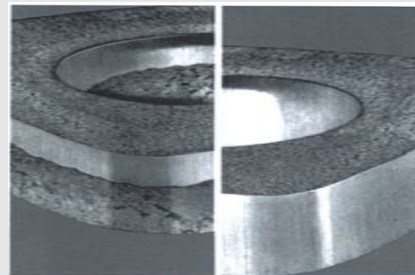
PRECISE CUTTING

anc components

- Feintool XFT Speed 250 | Feintool GKP 250
Feintool HFA 400 | Feintool HFA 630 |
Feintool MFA 160
tonnage: 160 – 630 t
- material thickness: 1 - 10 mm
- stamping speed: 20 – 100 strokes/min
- blow-off removal or mechanical removal arm
- straightening devices: 7 - 21 rollers



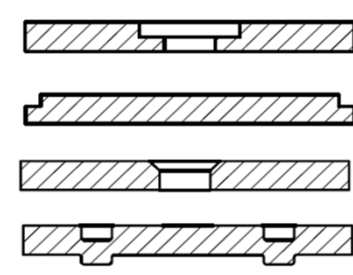
Chip machining substitution



Cutting surface cleanliness



Stainless steel processing

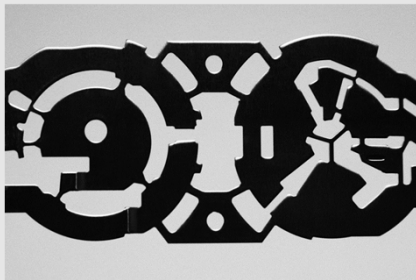


Volumetrical material forming

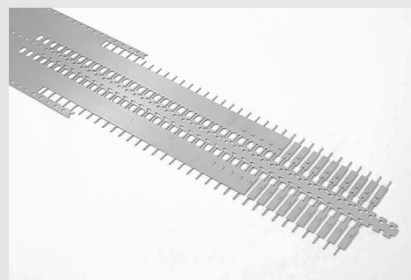
HIGH SPEED STAMPING

anc components

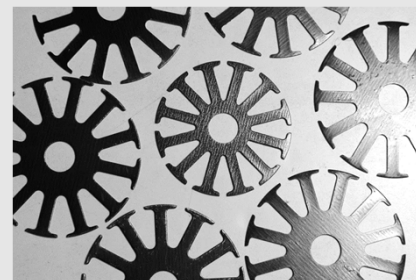
- Bruderer BSTA 500 | Bruderer BSTA 41
Bruderer BSTA 25 | Bruderer BSTA 50HL
tonnage: 25 – 50 t
- material thickness: 0,2 – 2,5 mm
- stamping speed: 100 – 850 strokes/min
- tool and process securing : light barrier, thickness
- possibility to integrate camera control
- part transfer: slump, slide, spool winding



tolerantly and shape demanding parts



practically verified max. speed: 800 strokes / min



rotor plates with collecting drain



process stability

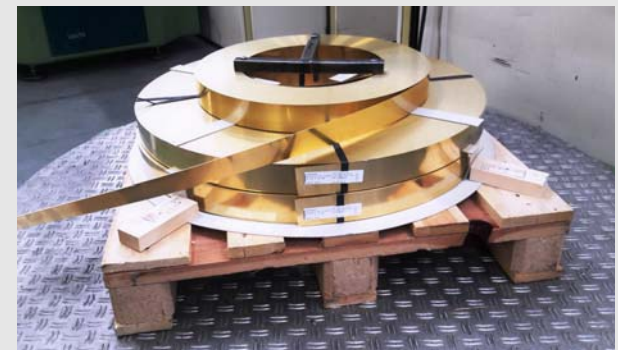
PROCESSED MATERIAL

anc components

- hot and cold rolled low-carbon steel:
DD11, DD13, DC01, DC04, S235JR
- micro-alloyed steel with medium and higher carbon content: 16MnCr5, 25CrMo4, 42CrMo4, C60S, C67S, C75S, C60S, 51CrV4
- deep-drawn steel: DX51, S250GD, S350GD
+ galvanic zinc
- stainless steel: 1.4301, 1.4307, 1,4016, 1.4310

Non-ferrous metals:

- copper
- copper alloys: CuZn37, CuSn6, CuNi18Zn20
+ zinc-plated
- aluminium: ALMg3



SECONDARY OPERATION

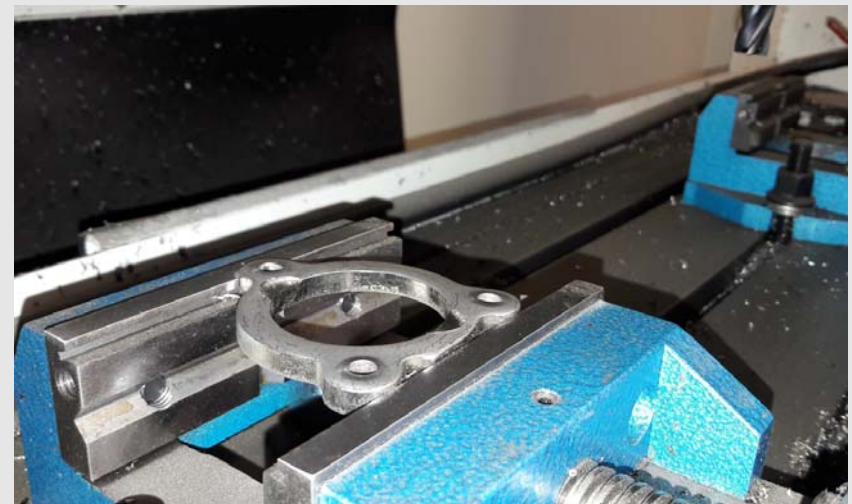
anc components

Belt grinding:

- roughness requirements is achieved
- parts are fixed: magnetic or by a special template for stainless steel materials
- 4 stations: roughing, finishing, edge deduction, polishing
- one or both side grinding

Milling:

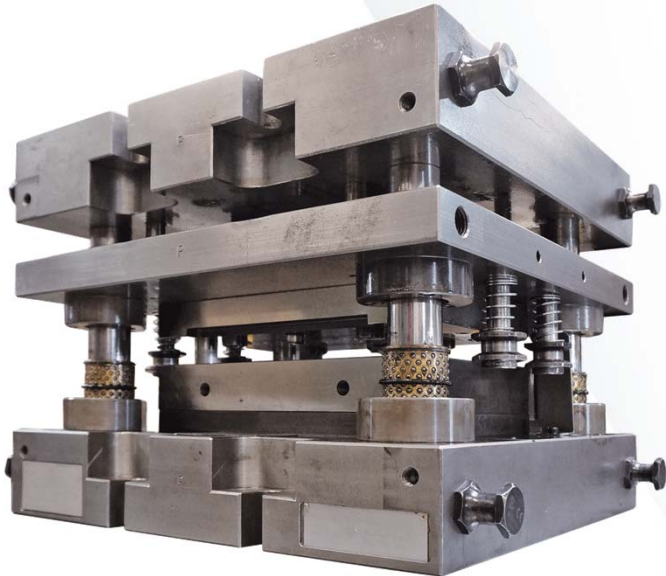
- CNC controlled
- milling of different shape elements: pockets, slots, blanked holes



TOOL SHOP

anc components

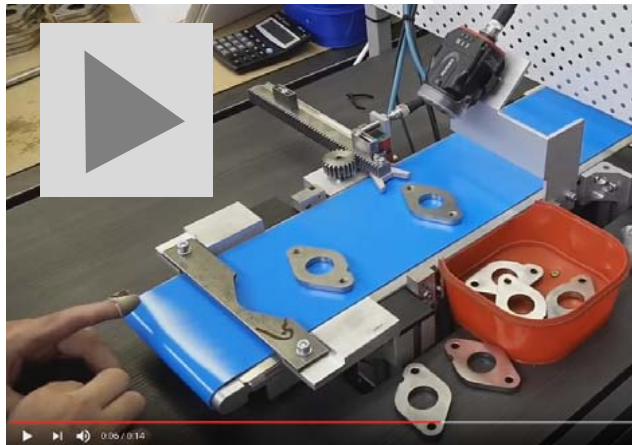
- stable team
- all shifts are covered
- fully equipped for ordinary maintenance
- design and production of new tools
- experience with relocation and optimization of tools



CONTROLLING LABORATORY

anc components

- measurement: length dimensions, roughness, hardness, geometrical tolerances, tothing
- 2x 2D device: Keyence, Baty
- 1x 3D device: Scheffeld
- air-conditioned laboratory
- statistical control of processes
- camera control: detection of thread presence



OUR VISIONS

anc components

We are constantly developing. We have a clear conception where we want to be within one, two, five years.

The nearest future will bring us the following:

- administration and social facilities building
- project leading to better efficiency in internal data mining

Medium-term plan:

- material warehouse building
- purchase of a backup press Feintool 600 t
- independence in development and production of stamping tools

